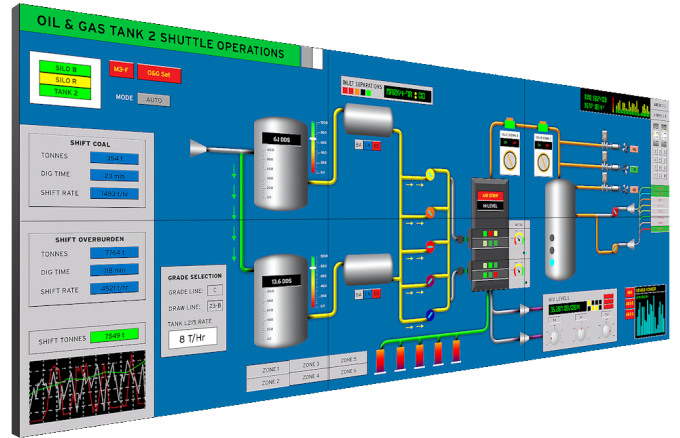




# Clarity Matrix G2 LX55HDU

## LCD Video Wall System

The 55" Clarity® Matrix® LX55HDU-L features Full HD resolution, LED backlighting, and a mere 3.7mm bezel gap for outstanding tiled visual performance. This model features standard brightness of 500 nits for environments with controlled ambient lighting. Featuring the Planar® EasyAxis™ Mounting System, Clarity Matrix LX55HDU-L has an ultra-thin installed depth of 3.6"/93mm, 6-axis adjustment cams for perfect panel-to-panel alignment, and front-service mode.



SPECIFICATION	DETAIL
Planar Part Number	997-7782-01
Technology	Commercial-grade direct view LCD
Diagonal	55 inches
Aspect Ratio	16:9
Native Resolution Panels	1920 x 1080
Tiled Bezel Width	0.15" (3.7 mm)
Brightness (typ)	500 cd/m <sup>2</sup> or nits
Response Time (typ)	8 ms
Contrast ratio (full field)	3500:1
Full viewing angle	178°
Backlight life (1/2 brightness)	50,000 Hrs
Mounted Depth	3.6" wall to front of screen
Acoustic Noise	Fanless operation
Heat load	557 BTU per hour at 500 nit
Operating temperature range	5 - 40 Degrees C
Operating humidity range	20-90% RH non-condensing
Backlight control	Individual and wall control
Backlight sensing and reporting	At display level

<b>Display module position sensing</b>	Auto-sensing integrated
<b>Power Consumption (typ)</b>	163 watts
<b>Power supply voltage</b>	100-230V AC ± 10%, 50 to 60 Hz
<b>Power Status</b>	Diagnostics LEDs, health monitoring and alerts
<b>Safety regulations</b>	Complies with EN60950, FCC Class A, CISPR22/85, CE, EU RoHS
<b>Data Inputs</b>	4 HDMI inputs, 1 DisplayPort input
<b>Control</b>	IR Remote, RS232, Ethernet (optional)
<b>Per Panel Dimensions (Including Mount)</b>	47.78" x 26.94" x 3.6" (1213.6 mm x 684.3 mm x 91.4 mm)
<b>Per Panel Weight (Including Mount)</b>	59 lbs (26.8 kg)
<b>Shipping weight</b>	150 lbs (68.0 kg)
<b>Touch Options</b>	Clarity Matrix MultiTouch Kits

For more information, please visit [www.leyard.com](http://www.leyard.com)

*Specifications are subject to change without notice.*

*Specification Report Date: 8/15/2018*

*© Copyright 2018 Leyard All rights reserved*